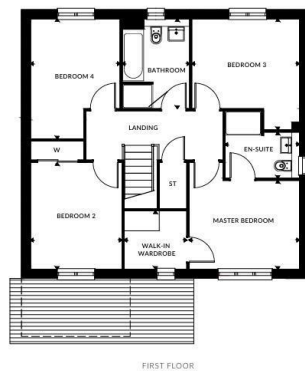
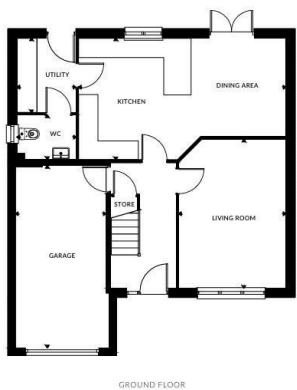




FIXED ASKING PRICE

**£389,995**

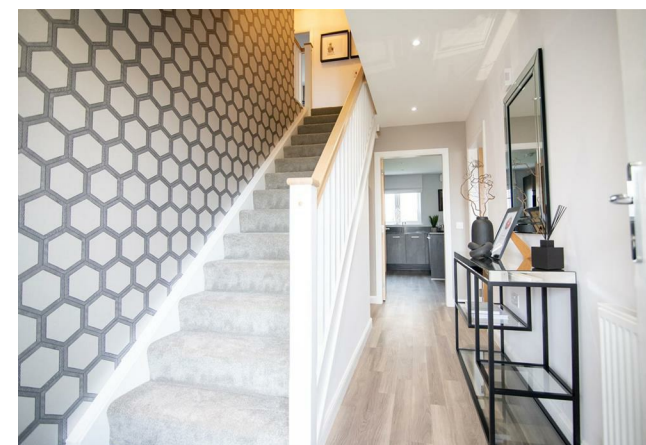
**The Larch**  
Strathaven, ML10 6GW



First Floor	Metric Sizes	Imperial Sizes
Master Bedroom	3.63m x 3.51m	11' 10" x 11' 6"
En-suite	2.44m x 2.20m	8' 0" x 7' 2"
Walk-in Wardrobe	2.04m x 1.90m	6' 8" x 6' 2"
Bedroom 2	3.00m x 3.51m	9' 10" x 11' 6"
Bedroom 3	3.54m x 3.60m	11' 7" x 11' 9"
Bedroom 4	2.94m x 3.90m	9' 7" x 12' 9"
Bathroom	2.20m x 2.94m	7' 2" x 9' 7"

Ground Floor	Metric Sizes	Imperial Sizes
Living Room	3.53m x 4.90m	10' 11" x 16' 0"
Kitchen/Dining	6.86m x 4.00m	22' 6" x 13' 1"
Utility	1.92m x 2.44m	6' 3" x 8' 0"
WC	1.87m x 1.39m	6' 1" x 4' 6"
Garage	3.07m x 6.00m	10' 0" x 19' 8"

**Total Area** 133.20 m<sup>2</sup> | 1,434 Sq Ft



Energy Efficiency Rating		Current	Potential
Very energy efficient - lower running costs			
(92 plus)	A		
(81-91)	B		
(69-80)	C		
(55-68)	D		
(39-54)	E		
(21-38)	F		
(1-20)	G		
Not energy efficient - higher running costs			
<b>Scotland</b>		EU Directive	2002/91/EC

Agents Note: Whilst every care has been taken to prepare these particulars, they are for guidance purposes only. All measurements are approximate and are for general guidance purposes only and whilst every care has been taken to ensure their accuracy, they should not be relied upon and potential buyers/tenants are advised to recheck the measurements.



**OFFICE ADDRESS**  
 9 Townhead Street  
 Strathaven  
 ML10 6AB

**OFFICE DETAILS**  
 01357 510088  
 judithmcgill@cruive-estateagents.co.uk